

SPXC SERIES SOLAR FUSE

1500 Vdc • 1 – 4 A



Description

The Littelfuse SPXC solar string fuse is designed specifically for 1-4 A 1500 Vdc applications.

Features/Benefits

- 10 x 57 mm package size
- UL 248-19 Listed
- Meets IEC 60269-6 electrical performance requirements
- Up to 50,000A interrupting rating

Applications

- Inverters
- Combiner boxes

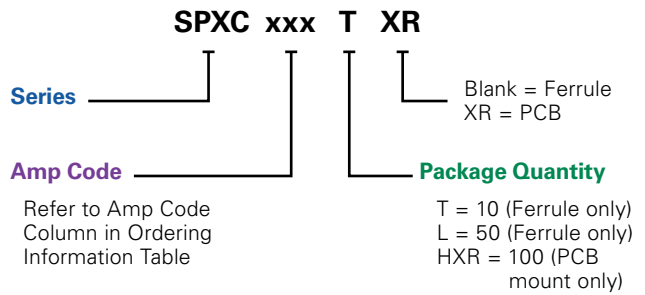
Web Resources

Download technical resources at: littelfuse.com/spxc
For silver plated version: littelfuse.com/spxcs

Specifications

Voltage Rating	1500 Vdc
Amperage Rating	1, 2, 2.25, 2.5, 3, 3.5, 4 A
Interrupting Rating	15 kA (UL 248-19) 50kA (Self-Certified)
Time Constant	≤ 1ms
Material	Body: Melamine Caps: Copper Alloy (Nickel Plated)
Approvals	UL 248-19 Listed (File: E339112)
Environmental	RoHS Compliant REACH
Country of Origin	Mexico

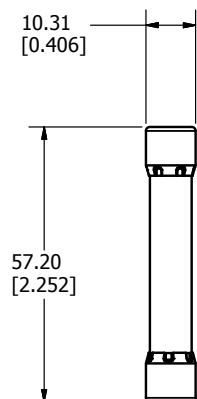
Part Numbering System



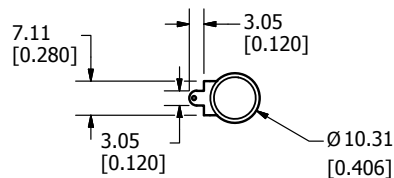
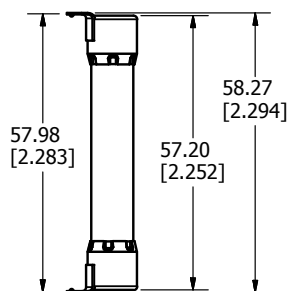
SERIES	AMP	PACKAGE QUANTITY	CATALOG NUMBER	ORDERING NUMBER
SPXC	2.25	10	SPXC2.25	SPXC2.25T
SPXC	4	50	SPXC004	SPXC004.L

Dimensions mm (inches)

SPXC



SPXC WITH PCB LEADS



SPXC SERIES SOLAR FUSE

Ordering Information

SERIES	AMPERAGE	AMP CODE	CATALOG NUMBER	PRODUCT MARKING	PACK QUANTITY	ORDERING NUMBER	UPC
SPXC	1	001.	SPXC001	SPXC 1	10	SPXC001.T	07945822129
					50	SPXC001.L	07945822131
SPXC	2	002.	SPXC002	SPXC 2	10	SPXC002.T	07945822133
					50	SPXC002.L	07945822135
SPXC	2.25	2.25	SPXC2.25	SPXC 2 ¼	10	SPXC2.25T	07945819889
					50	SPXC2.25L	07945819891
SPXC	2.5	02.5	SPXC02.5	SPXC 2 ½	10	SPXC02.5T	07945819893
					50	SPXC02.5L	07945819895
SPXC	3	003.	SPXC003	SPXC 3	10	SPXC003.T	07945819897
					50	SPXC003.L	07945819899
SPXC	3.5	03.5	SPXC03.5	SPXC 3 ½	10	SPXC03.5T	07945819901
					50	SPXC03.5L	07945819903
SPXC	4	004.	SPXC004	SPXC 4	10	SPXC004.T	07945819905
					50	SPXC004.L	07945819907

SERIES	AMPERAGE	AMP CODE	CATALOG NUMBER	PRODUCT MARKING	PACK QUANTITY	ORDERING NUMBER	UPC
SPXC-R	1	001.	SPXC001-R	SPXC 1-R	100	SPXC001.HXR	07945822137
SPXC-R	2	002.	SPXC002-R	SPXC 2-R	100	SPXC002.HXR	07945822138
SPXC-R	2.25	2.25	SPXC2.25-R	SPXC 2 ¼-R	100	SPXC2.25HXR	07945822139
SPXC-R	2.5	02.5	SPXC02.5-R	SPXC 2 ½-R	100	SPXC02.5HXR	07945822140
SPXC-R	3	003.	SPXC003-R	SPXC 3-R	100	SPXC003.HXR	07945822141
SPXC-R	3.5	03.5	SPXC03.5-R	SPXC 3 ½-R	100	SPXC03.5HXR	07945822142
SPXC-R	4	004.	SPXC004-R	SPXC 4-R	100	SPXC004.HXR	07945822143

Electrical Specifications

AMPERAGE	VOLTAGE	INTERRUPTING RATING		NOM COLD RESISTANCE (ohm)	WATTS LOSS AT 100% RATED CURRENT (W)	WATTS LOSS AT 80% RATED CURRENT (W)	MELTING I ² t (A ² s) 15 kA (1500Vdc)	TOTAL CLEARING I ² t (A ² s) 15 kA (1500 Vdc)
	DC	AC	DC*					
1	1500	-	50kA	0.6253	1.07	.56	0.29	0.53
2	1500	-	50kA	0.1905	1.32	.70	1.55	5.13
2.25	1500	-	50kA	0.1245	0.90	0.50	5	13
2.5	1500	-	50kA	0.0793	0.91	0.50	11	26
3	1500	-	50kA	0.0721	0.92	0.51	14	40
3.5	1500	-	50kA	0.0487	0.94	0.53	34	87
4	1500	-	50kA	0.0439	0.95	0.54	56	127

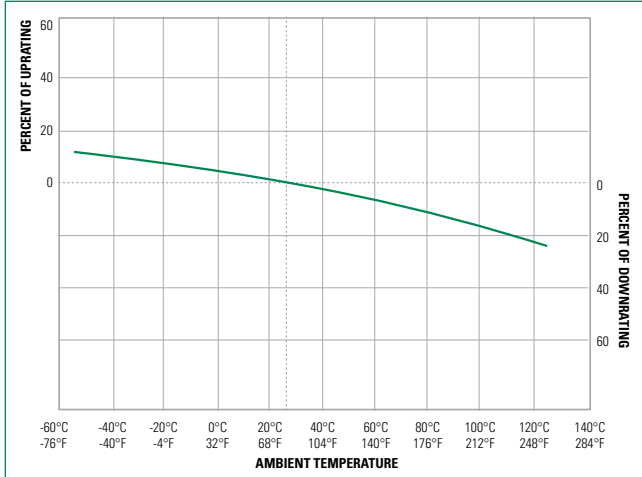
* 15 kA UL

Electrical Specification – Agency Requirements

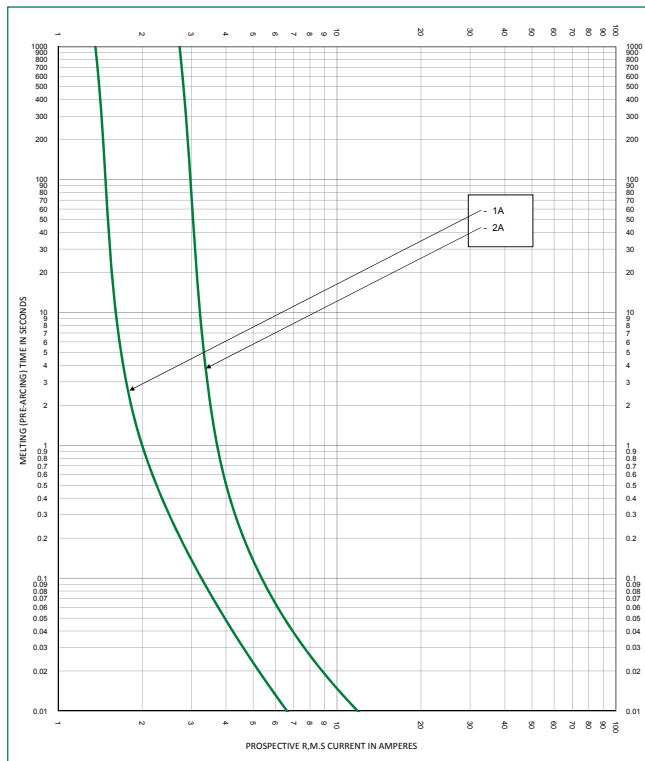
AMPERAGE RATING	OPENING TIME (MINUTES)				
	100% OF AMP RATING PER UL	113% OF AMP RATING PER IEC	135% OF AMP RATING PER UL	145% OF AMP RATING PER IEC	200% OF AMP RATING PER UL
1-4	Temperature Stabilization	60 Min	60 Max	60 Max	4 Max

SPXC SERIES SOLAR FUSE

Temperature Rating Curve (Temperature of Air Immediately Surrounding Fuse)



Time Current Curve (1-2 A)



Time Current Curve (2.25-4 A)

